



THE
WHITE KITCHEN
COMPANY

OUR DESIGN GUIDE

Designing your dream kitchen is a fun, exciting, and rewarding experience that will grant you a beautiful, bespoke kitchen for you to enjoy every day.

To achieve this, simply follow this Design Guide which will take you through the designing process step by step. If you need inspiration along the way, feel free to browse our previous projects on our website via our Gallery.

Please remember we are always here to help, if you need any advice during the process, feel free to:

telephone 01604 435835 or

email info@thewhitekitchencompany.com





STEP ONE

Make a wish list

THINGS I NEED

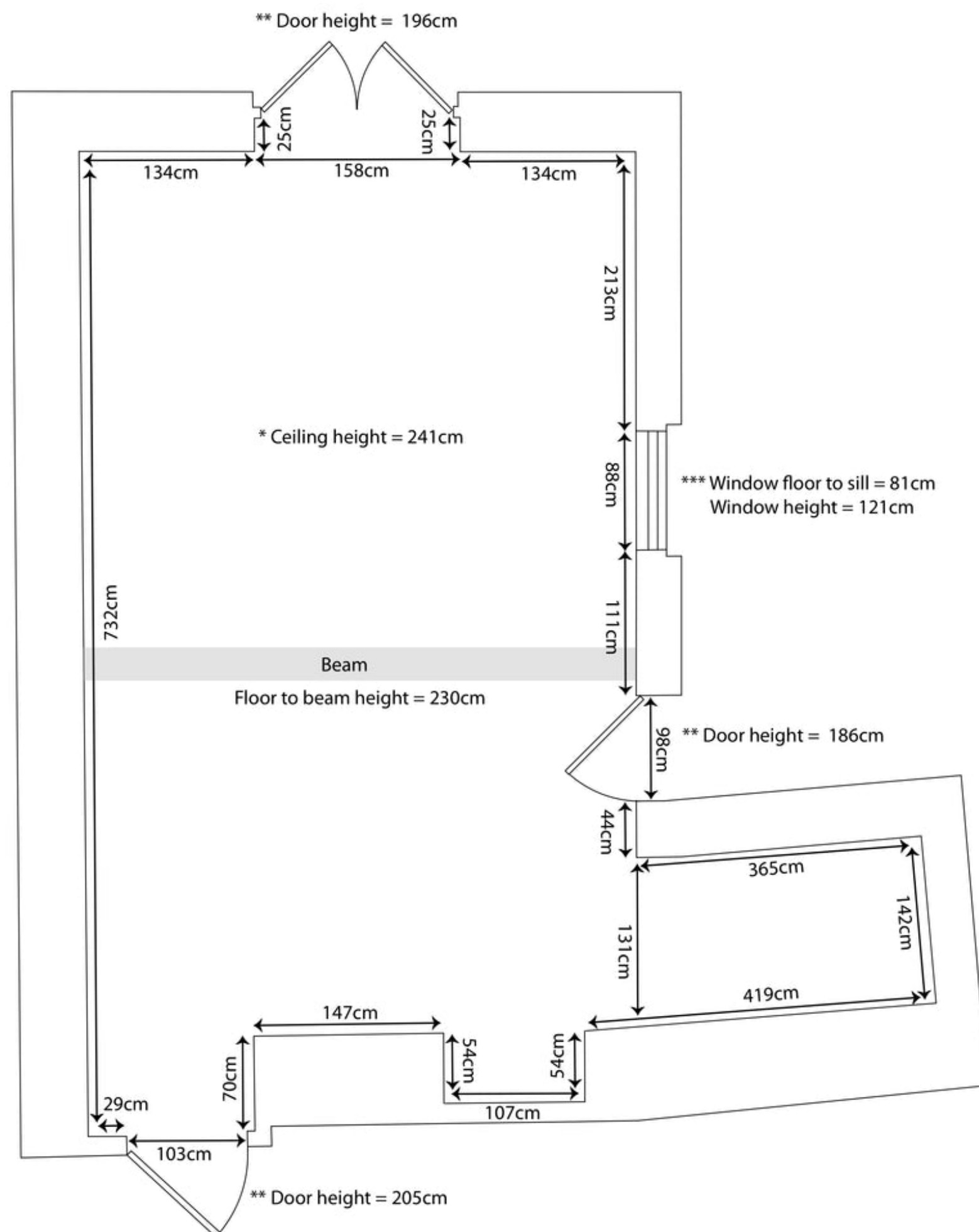
- Sink - What style and size
- Cooker - What style and brand
- Fridge - What style and brand
- Dishwasher - Integrated or not

THINGS I WANT

- Styles of cabinets - Shaker, Period English or Fusion
- Fitted or Freestanding cabinets
- Wine Fridge/ Rack
- Warming Drawer
- Microwave
- Larder Cupboard or Pantry

THINGS I LIKE

- Lots of Drawers/Cupboards
- Handles, Pulls, Knobs
- Worktop Material



STEP TWO

Measure your space

When measuring your space, all measurements should be in millimetres. First, draw the shape of your room; most kitchens are square, oblong, or L-shaped. If there are any columns in the room, measure the width and depth of these and include them on the drawing.

Next, measure the floor to ceiling height and if there are any beams, measure the floor to underside height of these too.

Then, for each window, list the floor to window sill height, as well as the height of each window from the sill to the top of the window.

When measuring doors, make sure to include the architrave (the frame around the door).

Lastly, note where all relevant features are, such as light switches, electric sockets, and beams that come down from the ceiling low enough to touch your kitchen cabinets.

STEP THREE

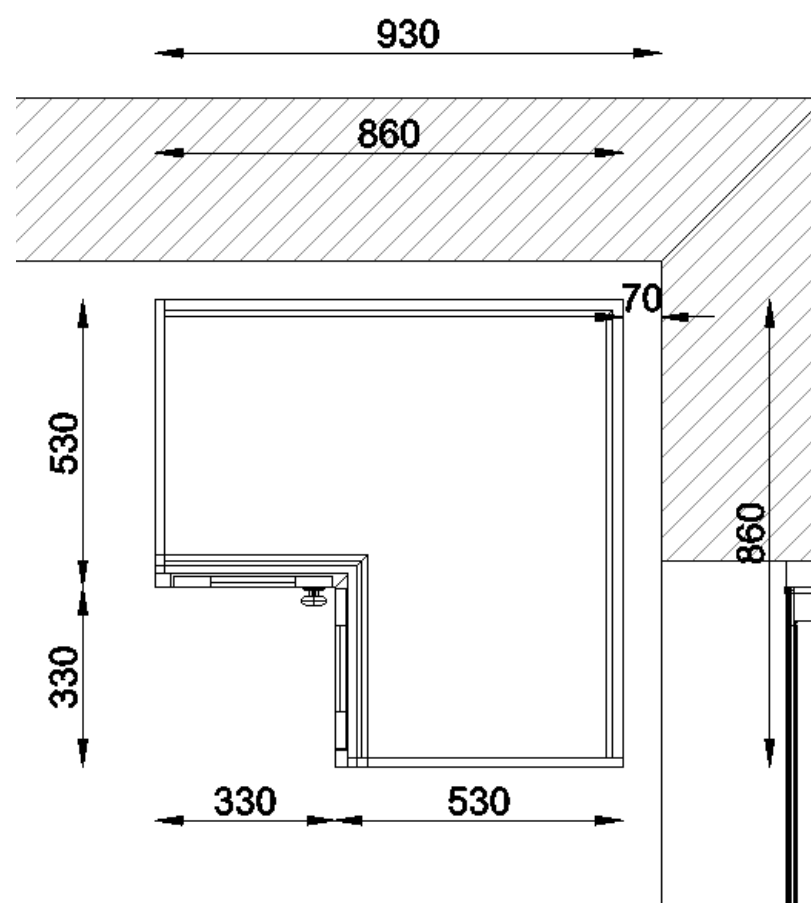
Design your kitchen

First, position the sink. This may stay where it is already, with the plumbing already there, or possibly under a window overlooking your garden. If you would like a dishwasher, this usually goes next to the sink in order to make the plumbing easier.

After this, many consider ‘the working triangle’, an idea that a kitchen’s three main work areas should form a triangle. Specifically the sink, refrigerator and oven.

Once you have placed your appliances, fill in the gaps with cabinetry of your choice, whether that be cupboards or drawers. Whatever it is you need, we have it! Be aware that they may need to be shuffled round to eventually fit in your space.

Always allow a minimum of a 30mm gap between a wall and a cabinet and purchase a scribe piece to fill this gap. For base cupboards you also need a scribe to go between the side of the cupboard and the wall where the side is on show; you shouldn’t need this for wall cupboards unless your walls are very wobbly.



Here are some important measurements you may need throughout this step:

- Dishwashers are 600 mm wide and other built-in appliances are 660 mm wide.
- Bin Cupboards are 470 mm wide
- Tray Cupboards are 200 mm wide
- Wine Racks can be 160 mm or 360 mm wide
- Our Corner Cupboards come in different sizes. However, the most popular one is measures 860 mm. However, it takes up 930 mm if you keep it in line with the rest of the cupboards which are always fitted 70 mm from the wall.



STEP FOUR

Order your cabinets

Once you have created your kitchen plan, the hard part is over! Now it is time to use this to order the cabinetry from our online shop. Don't forget to add accessories like the cornice and skirting.

We know how hard it can be to keep track of multiple orders from different companies, so to make your life easier we can supply you with a quote for electrical appliances and worktops too! If you would prefer you can source them yourself - the choice is yours.

Our Project Manager will then place the order with our factory. At this stage, they'll let you know when you can expect to receive your delivery so you can begin planning for its arrival. If you change your mind about anything, don't worry, you have two weeks from deposit to make any final changes, any changes after this two week period will be considered a new project.

Our skilled craftsmen will then begin creating your kitchen. They will hand paint it in your chosen colour or prime it ready for you to paint yourself at home. Any changes you make at this time are treated as separate new orders and are therefore chargeable.

STEP FIVE

Sit back and relax

Enjoy your beautiful new handmade kitchen. Now you can invite your family and friends over to marvel at your new creation. The best part is that you can tell them that it was all designed by YOU.

ADDRESS

Seven,
Grange Lane,
Pitsford,
Northampton,
NN6 9AP

TELEPHONE

01604 435835

EMAIL

info@thewhitekitchencompany.com



THE
WHITE KITCHEN
COMPANY